

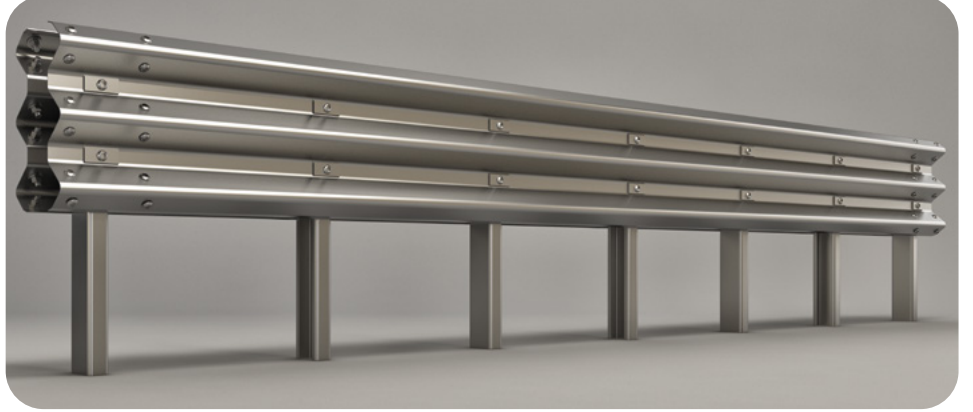
OTOKORKULUK SİSTEMLERİ

GUARDRAIL SYSTEMS



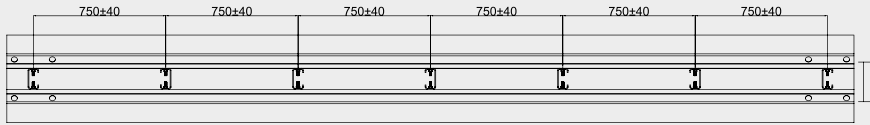
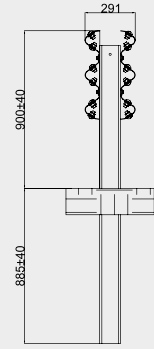
TR H2 W2 DS

CE 646_Rev.1/2131 CPR/2017



SİSTEM TEKNİK DETAYLARI / SYSTEM TECHNICAL DETAILS

Engelleme Seviyesi / Containment Level	H2
Çarpma Şiddeti Değeri / ASI	B
Çalışma Aralığı Sınıfı / Working Width	W2 (0,60 < W ≤ 0,80)
Sistem Yüksekliği (m) / Height Above Ground Level (m)	0,9
Dikme Aralığı (m) / Post Spacing (m)	0,75
Montaj Tipi / Installation Type	Zemine çakım - On ground
Sistem Şekli / System Type	Çift taraflı - Double sided



NOTLAR / NOTES